



ecotrust

Socioeconomic Profile of Fisheries in the Cordell Bank and Gulf of the Farallones NMSs

Presentation to the joint fishing working group
8 December 2004
Charles Steinback and Astrid Scholz



Outline

- 👉 **Who we are and why we are here;**
 - 👉 **Review and discussion of fishery maps:**
 - Before and after: augmenting CDFG data with fishermen interviews;
 - 👉 **Review and discussion of summary statistics:**
 - More data than we know what to do with;
 - Some examples from the EIS analysis;
 - Help establish the regulatory timeline and key events.
 - 👉 **Next steps.**
- 



Who we are

- ☞ **Ecotrust is a non-profit think tank and community development organization;**
- ☞ **Working to build Salmon Nation—where economy, ecology, and equity are in balance;**
- ☞ **Sector programs in Fisheries, Food & Farm, First Nations, Forestry;**
- ☞ **In-house GIS department and research;**
- ☞ **Banking affiliate: Shorebank Enterprise, ~\$15 M in working capital loans;**
- ☞ **Collaborate with federal and state agencies, universities, industry, tribes &**

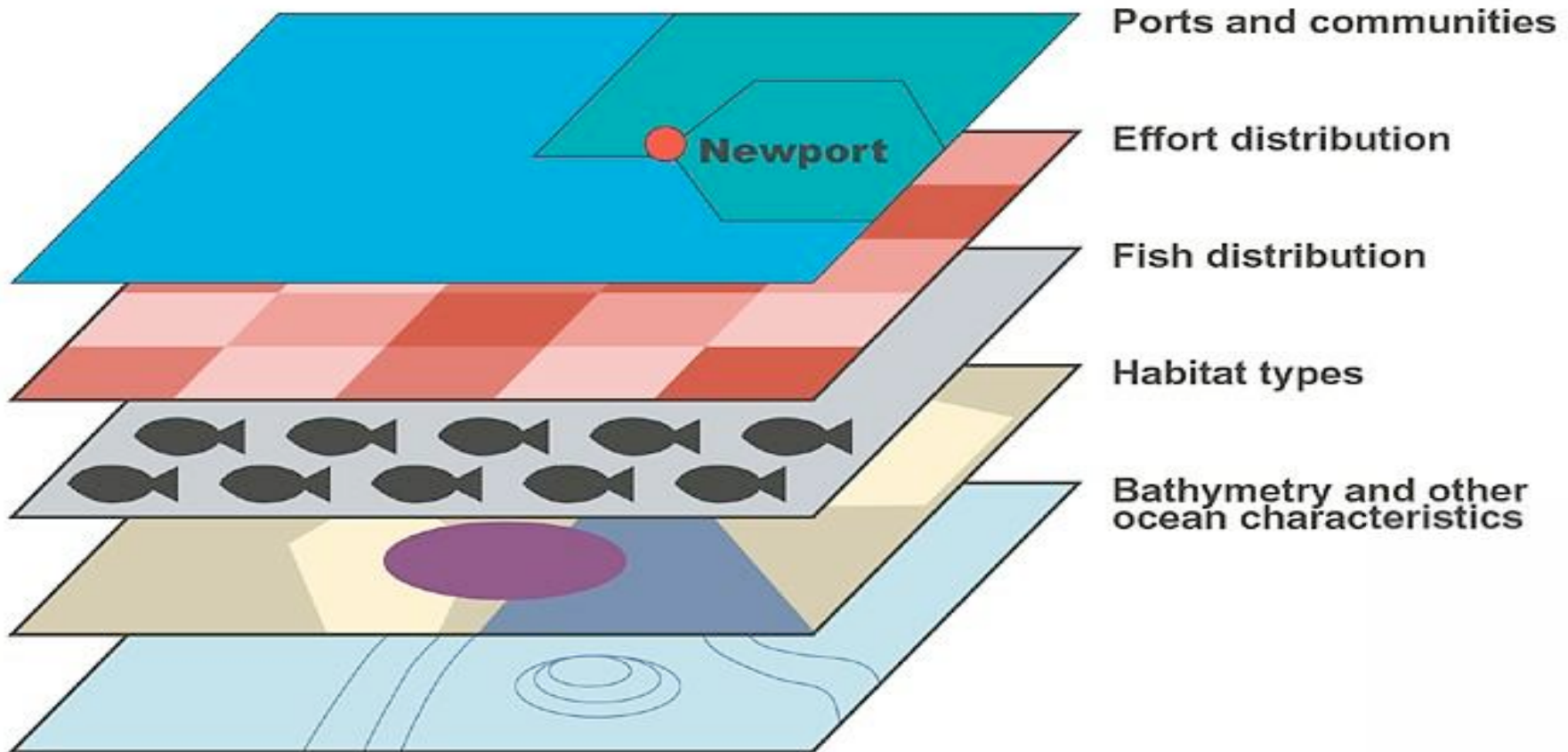


What we are doing here

- 👉 Provide socioeconomic expertise for MPA working group of the MBNMS;
- 👉 2001-2003 Project on coastwide groundfish fishery received NOAA funding for GIS tool development (www.ecotrust.org/gfr);
- 👉 FMSA contracts with us to provide socioeconomic baseline information and fisheries profiles in CB/GFNMS, and to assist in EIS;
- 👉 MBSF contracted with us to extend this analysis to MBNMS waters (completed);
- 👉 Details and updates at


OCEANI

Ocean Communities **Equity Ecology Analysis**
Economy






Outline

- ☞ **Who we are and why we are here;**
 - ☞ **Review and discussion of fishery maps:**
 - Before and after: augmenting CDFG data with fishermen interviews;
 - ☞ **Review and discussion of summary statistics:**
 - More data than we know what to do with;
 - Some examples from the EIS analysis;
 - Help establish the regulatory timeline and key events.
 - ☞ **Next steps.**
- 



Interviews with fishermen

- 🐟 Basic idea: use fishermen's knowledge of fishing grounds to constrain the CDFG data, then redistribute landings and revenues to those areas;
 - 🐟 Have interviewed all fishermen on MBNMS SMPA working group and CB/GFNMS Fishing working group;
 - 🐟 Analysis in progress:
 - *Review maps next!*
- 

Reviewing the fishermen's maps





Outline

-  **Who we are and why we are here;**
 -  **Review and discussion of fishery maps:**
 - Before and after: augmenting CDFG data with fishermen interviews;
 -  **Review and discussion of summary statistics:**
 - More data than we know what to do with;
 - Some examples from the EIS analysis;
 - Help establish the regulatory timeline and key events.
 -  **Next steps.**
- 



Status of analysis

- 👉 23 years of CDFG landing receipts and logbooks processes and spatially interpreted;
- 👉 completed qualitative data collection and literature review, in process of analyzing;
- 👉 in process of developing and applying data quality matrix for combining data sets, e.g., logbooks, observer, and landings data;
- 👉 spatialized some historical information

From *Angler's Guide* (1977)

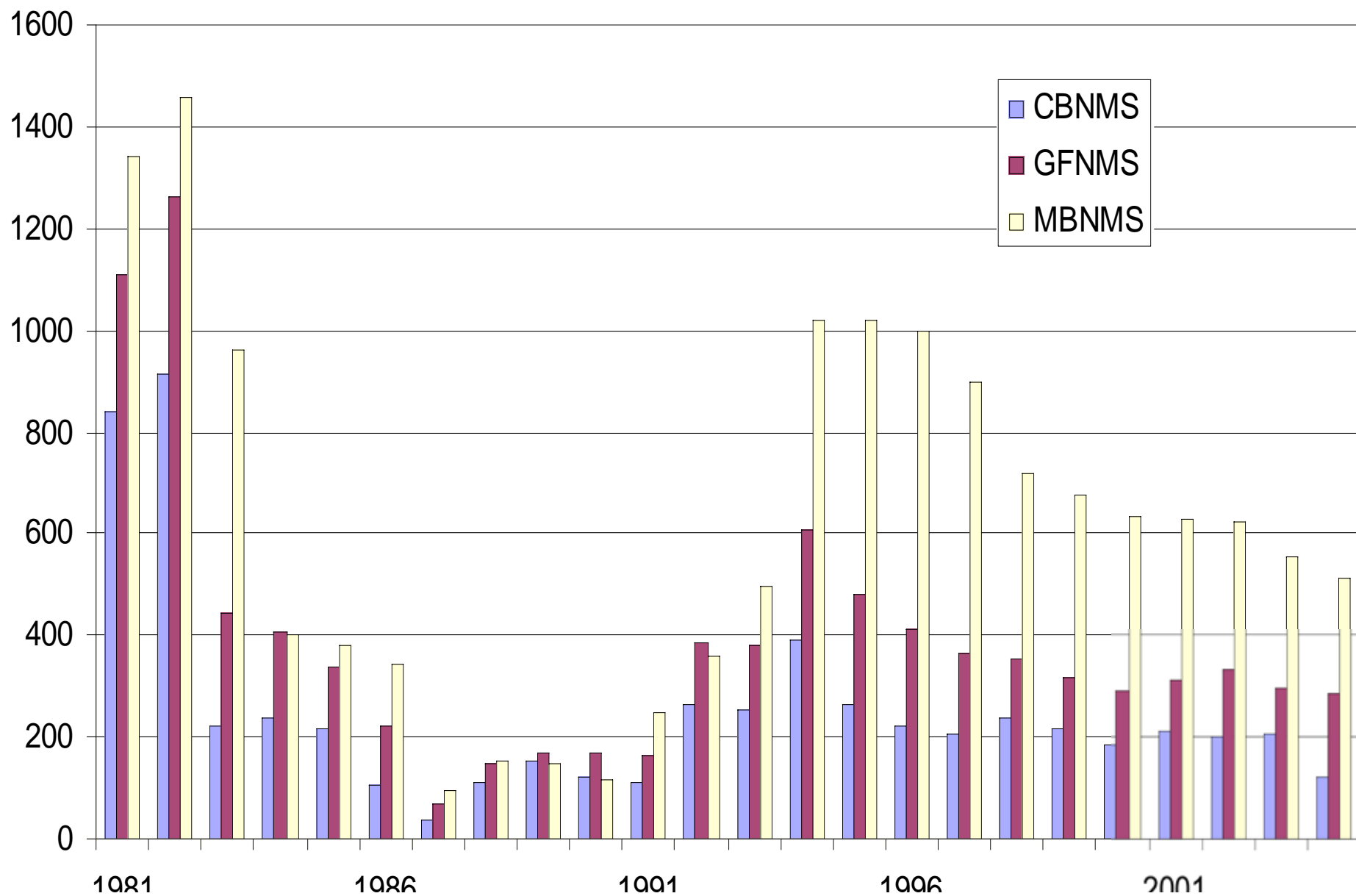


Examples from EIS analysis

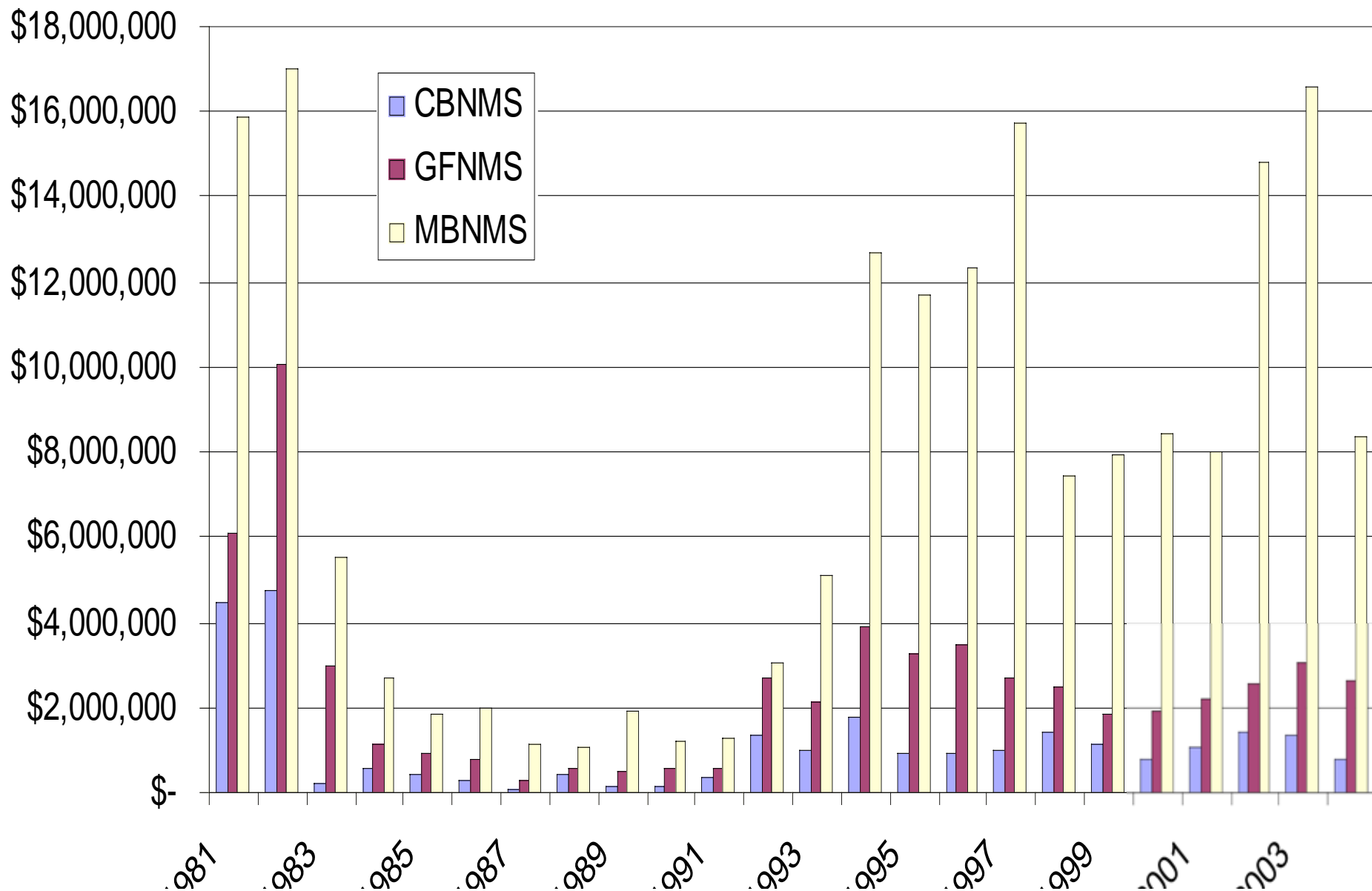
- ☞ **Caveat: this is still based on the literal interpretation of CDFG landing receipts by block;**
- ☞ **We expect this to change based on the composite fishing ground maps we are building:**
 - Using logbooks and observer data, where available and useful;
 - Using fishermen's maps.



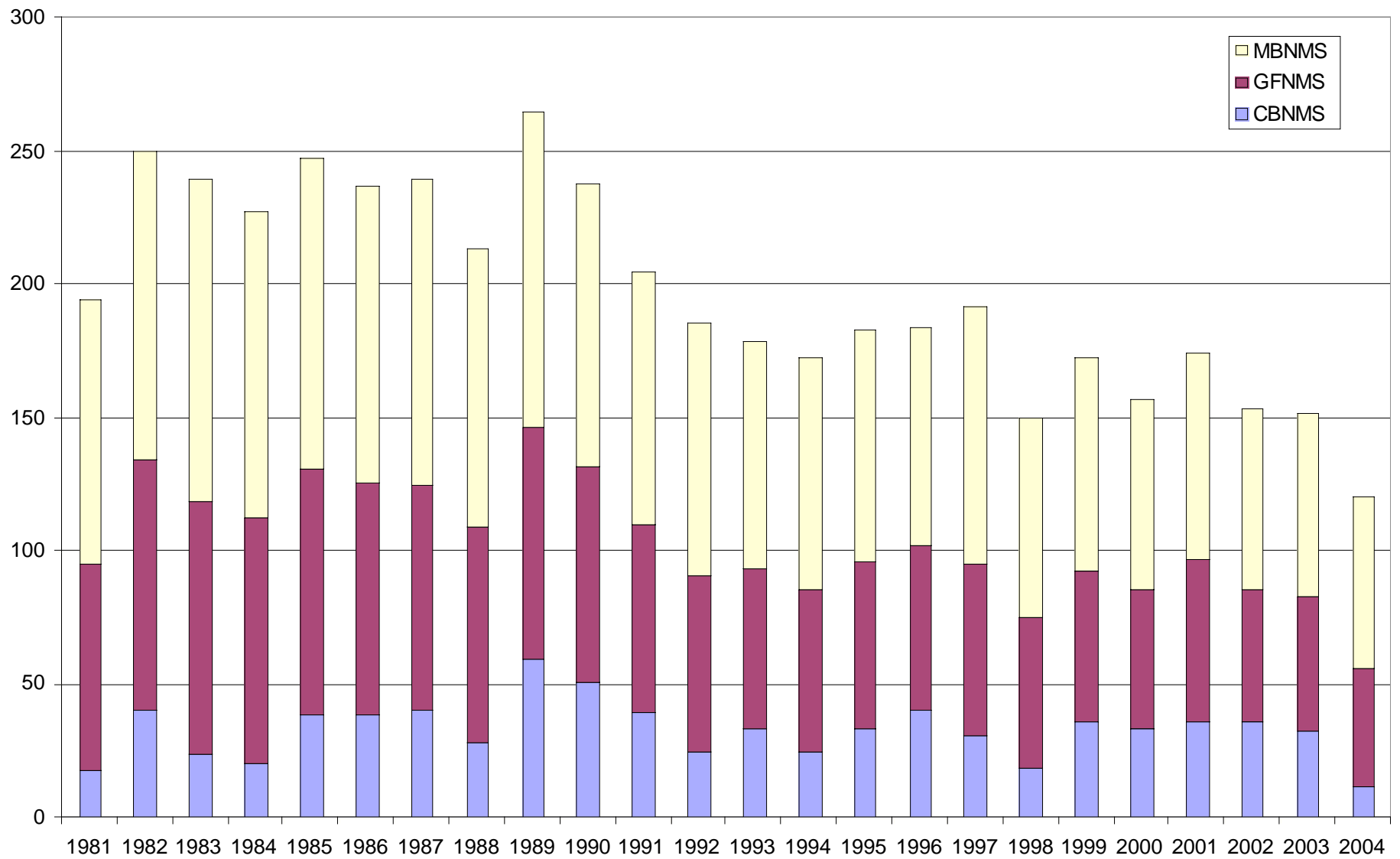
Number of commercial fishing vessels in sanctuary waters



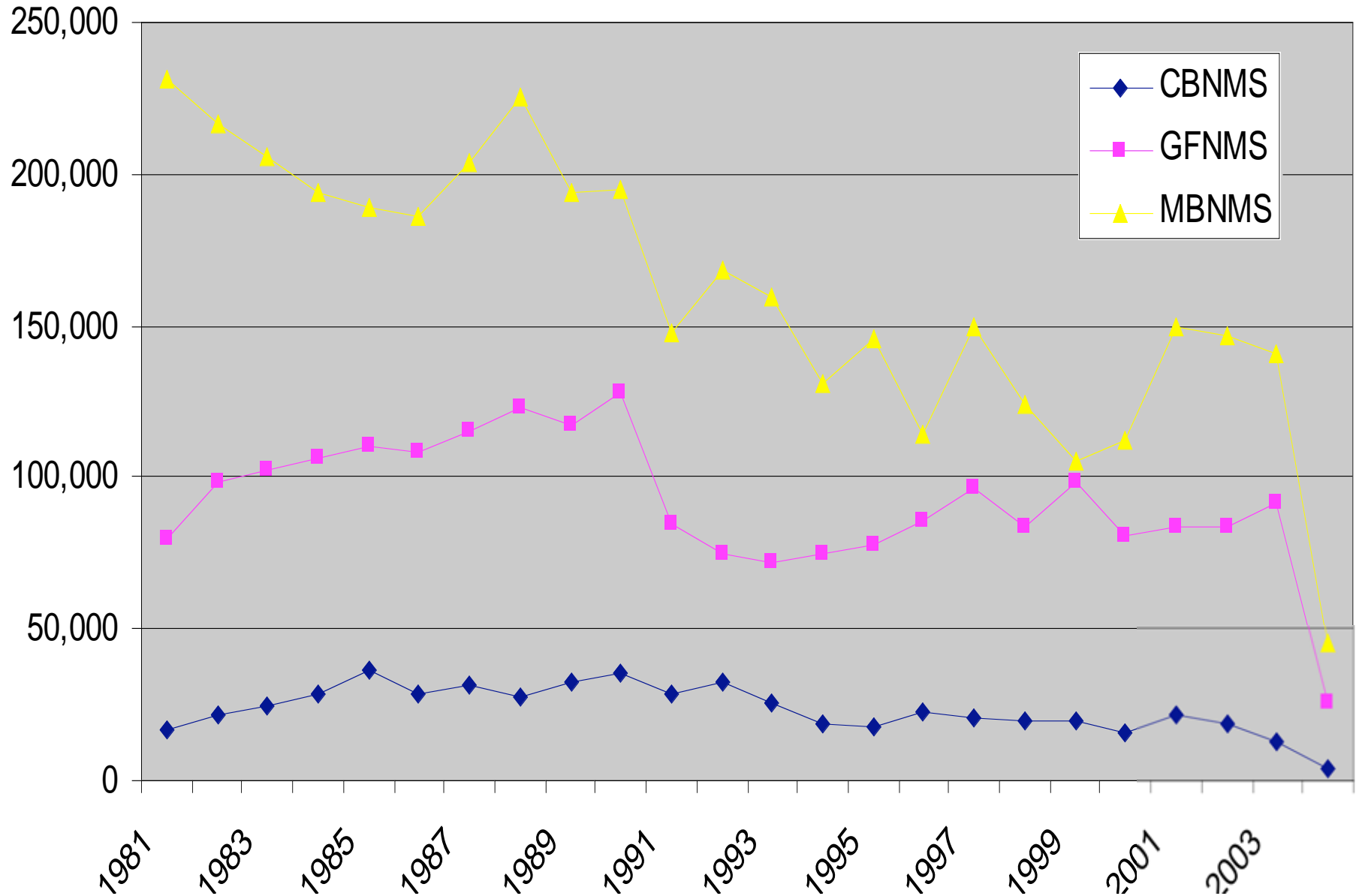
Total revenues (2003 \$)



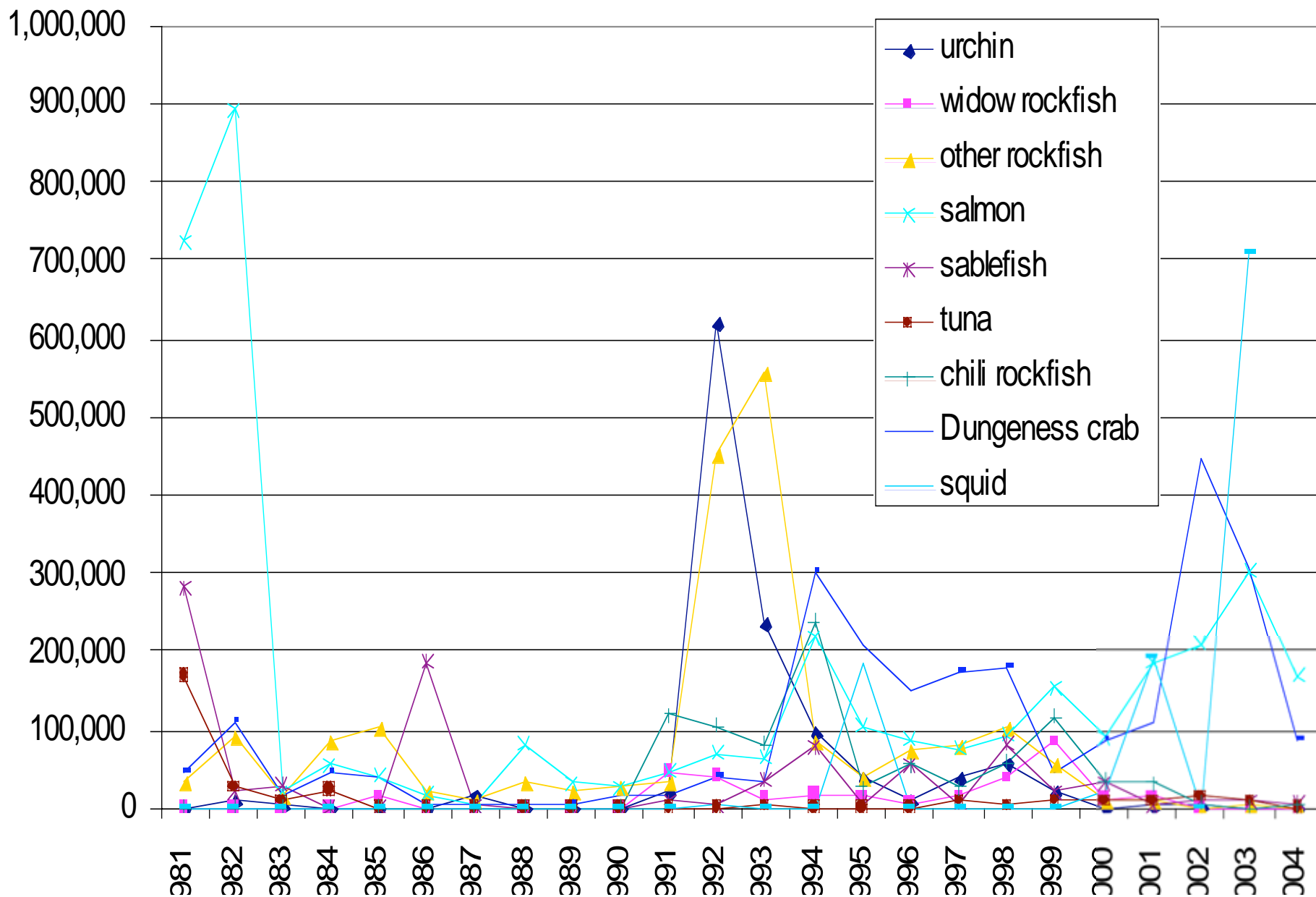
Number of CPFVs fishing in central California sanctuaries



Number of CPFV anglers in sanctuaries



Most important species (collectively >90% landings by volume) in CBNMS





Construct timeline





What next?




Your input please!

- Review our results and keep us honest.



Next steps:

- Continue analysis, based on group input;
 - Prepare deliverables for sanctuaries and/or CDFG—synergies with MLPA process?
 - Timeline: draft report out for review end of 12/04, revise and produce final report and database products by end of March '05.
- 



Contact Information

Ecotrust, 721 NW 9th Avenue, Suite 200,
Portland, OR 97209

Tel: 503 227 6225

www.ecotrust.org – www.inforain.org

astrid@ecotrust.org

charles@ecotrust.org

