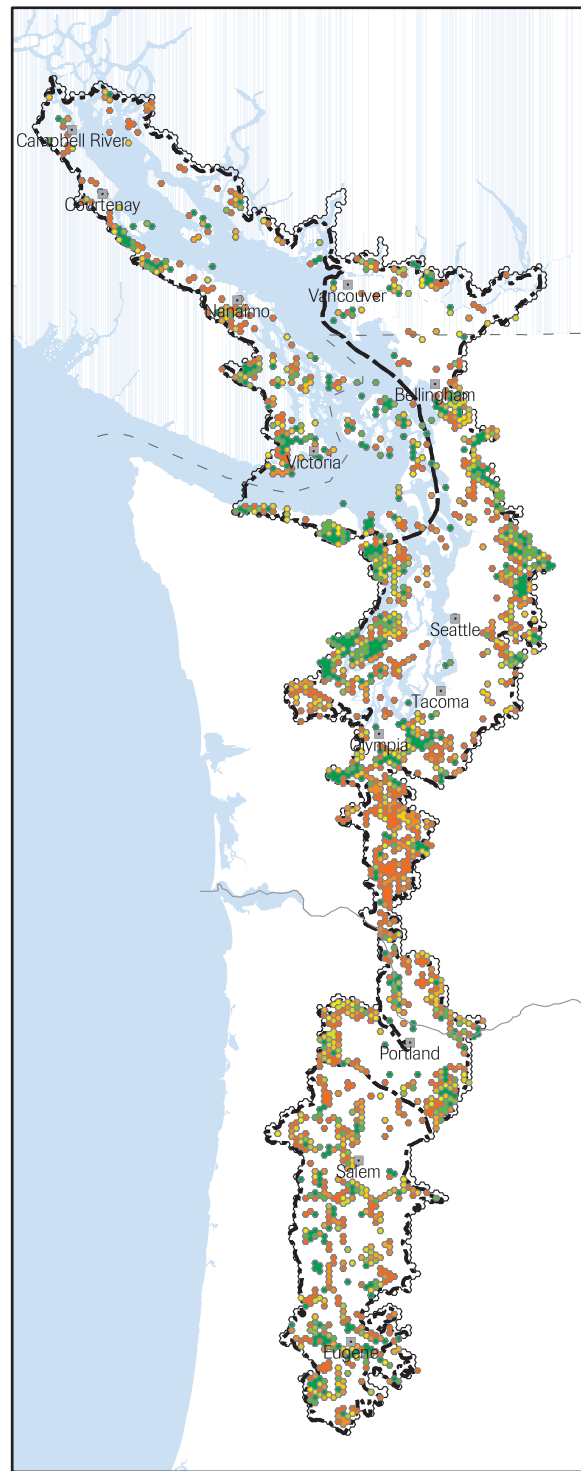
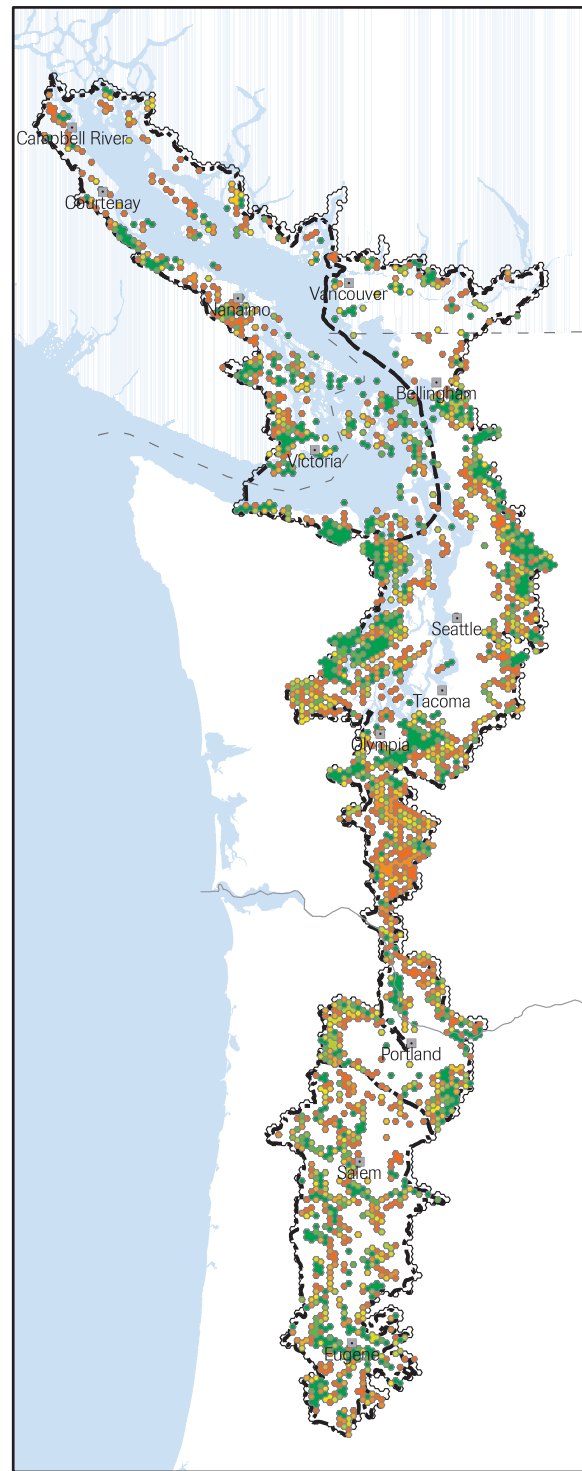


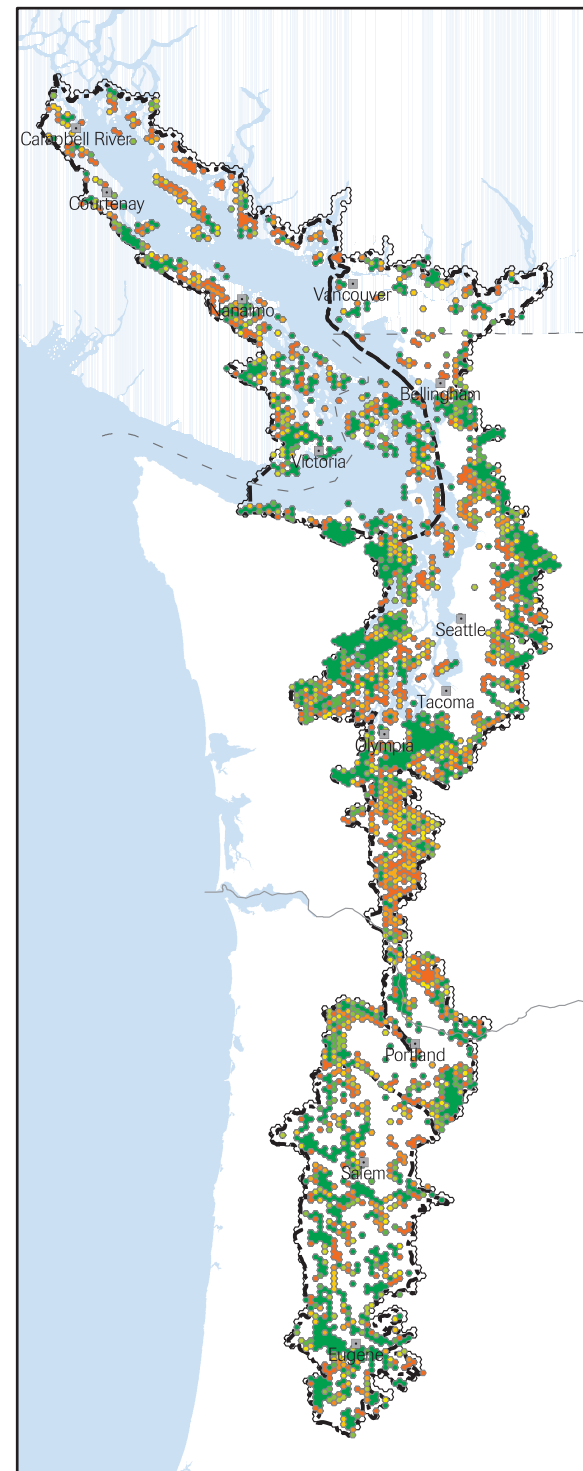
20% of standard goals for all targets



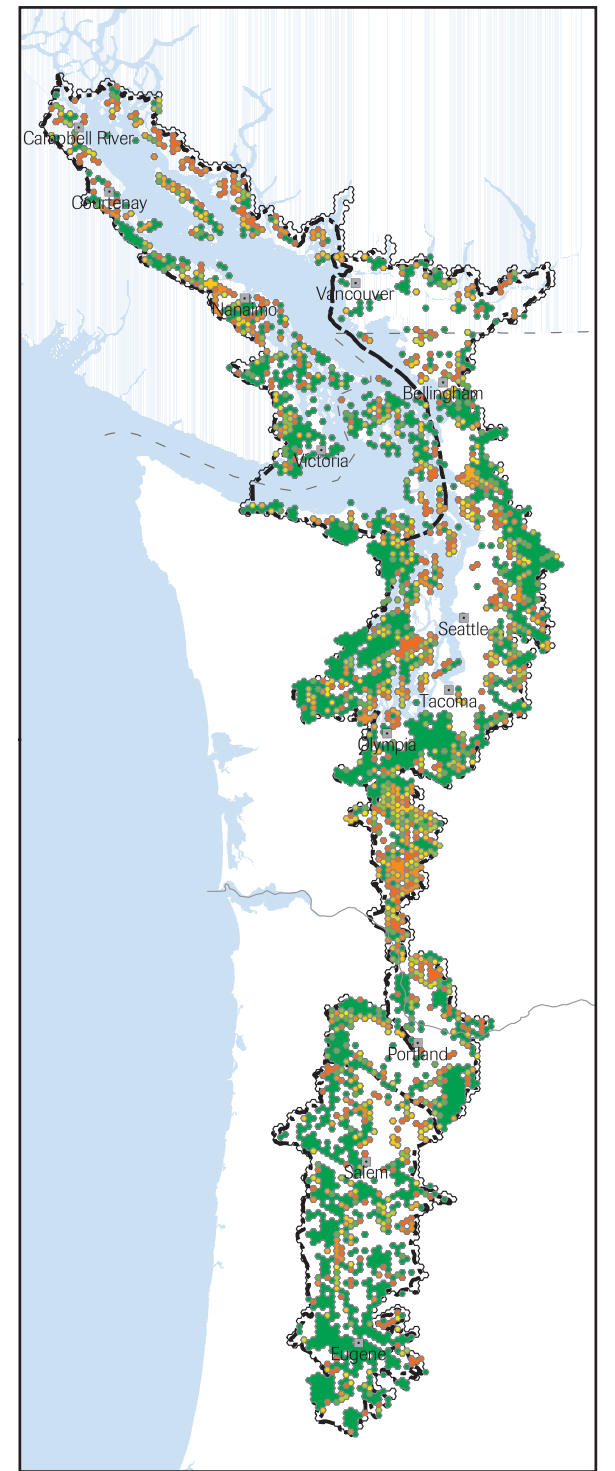
40% of standard goals for all targets



60% of standard goals for all targets



80% of standard goals for all targets



100% of standard goals for all targets

Relative Importance



Willamette Valley - Puget Trough - Georgia Basin Ecoregion

Map 6.3: SITES Model Sensitivity Analysis with Suitability Index

Changes in site selection as conservation goals are increased and with the suitability index. Colors indicate the relative importance of a hexagon for meeting the conservation goals. Dark green hexagons must always be included in the solution. Yellow and orange hexagons can be swapped with other yellow or orange hexagons. As goals increase the number of hexagons selected also increases, and as goals increase there are fewer options for meeting the goals. This is indicated by the number of green hexagons, which increases with increasing goals. The suitability index directs the solution toward public lands and away from urban areas.

1 inch equals 65 miles

0 10 20 30 40 50 60 70 Miles



0 20 40 60 80 100 120 140 Kilometers



Sources:
TNC, WDFW
March 2004

The Nature Conservancy

SAVING THE LAST GREAT PLACES ON EARTH



The Nature Conservancy (TNC) does not verify or guarantee the accuracy, reliability, or completeness of any data provided. TNC provides this data without any warranty of any kind whatsoever, either express or implied. TNC shall not be liable for incidental, consequential, or special damages arising out of the use of any data provided by TNC.

