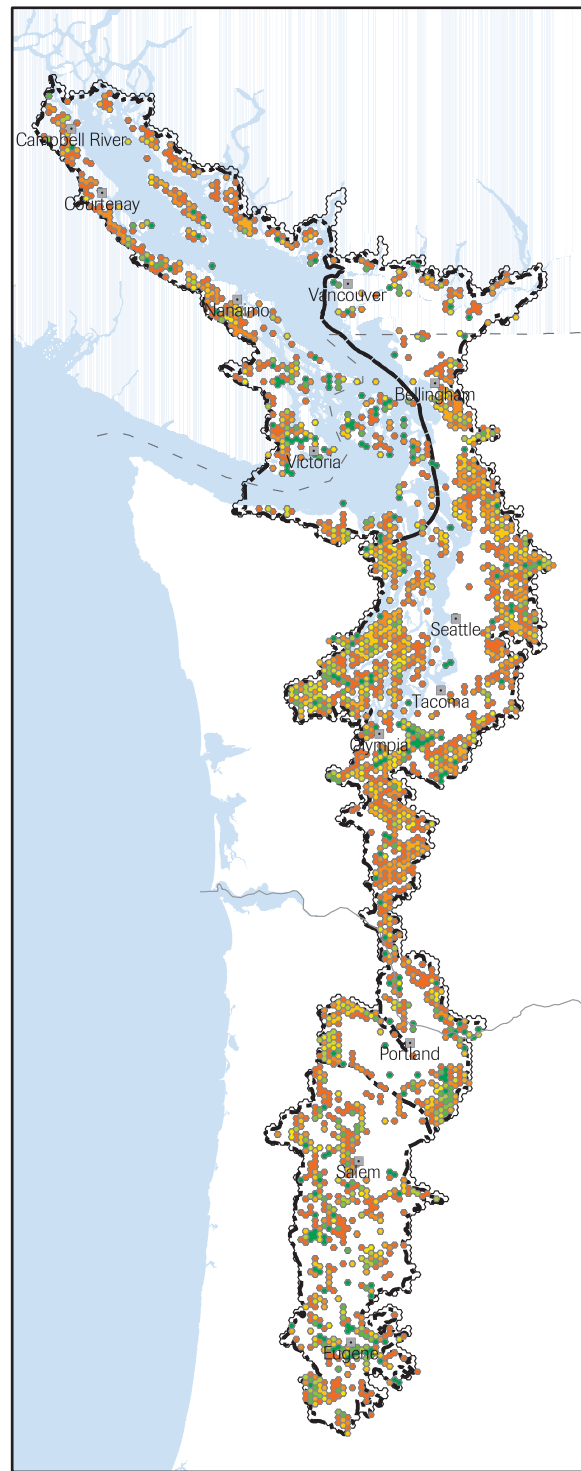
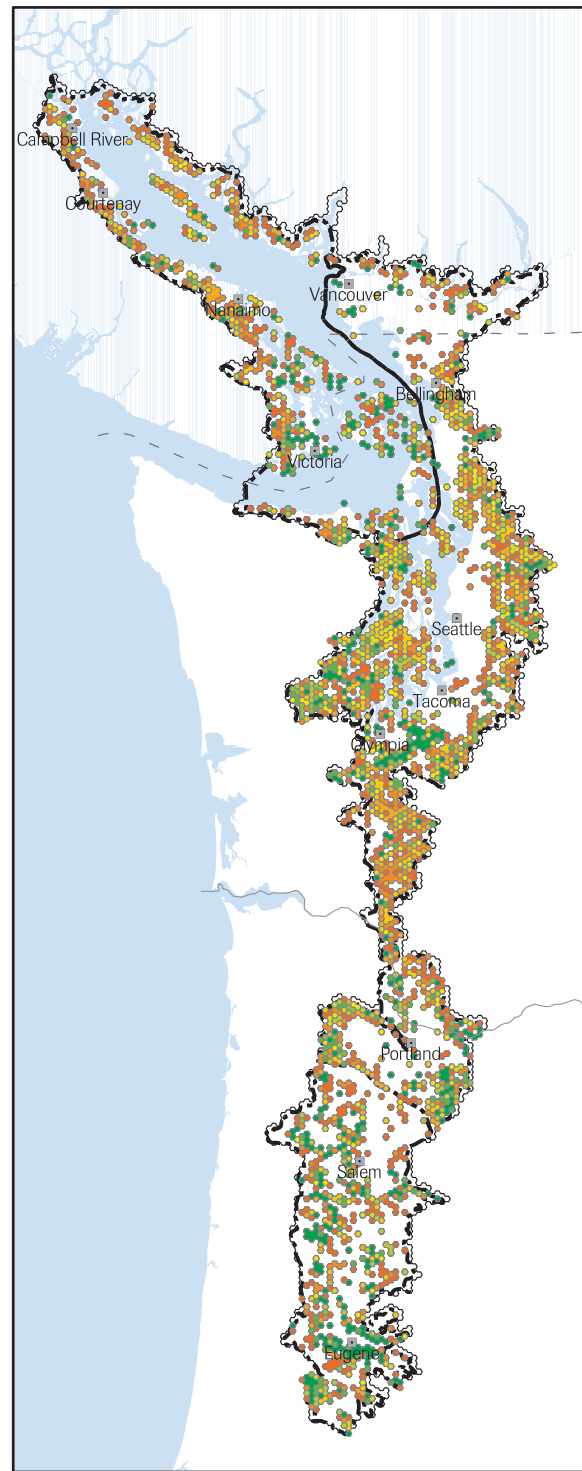


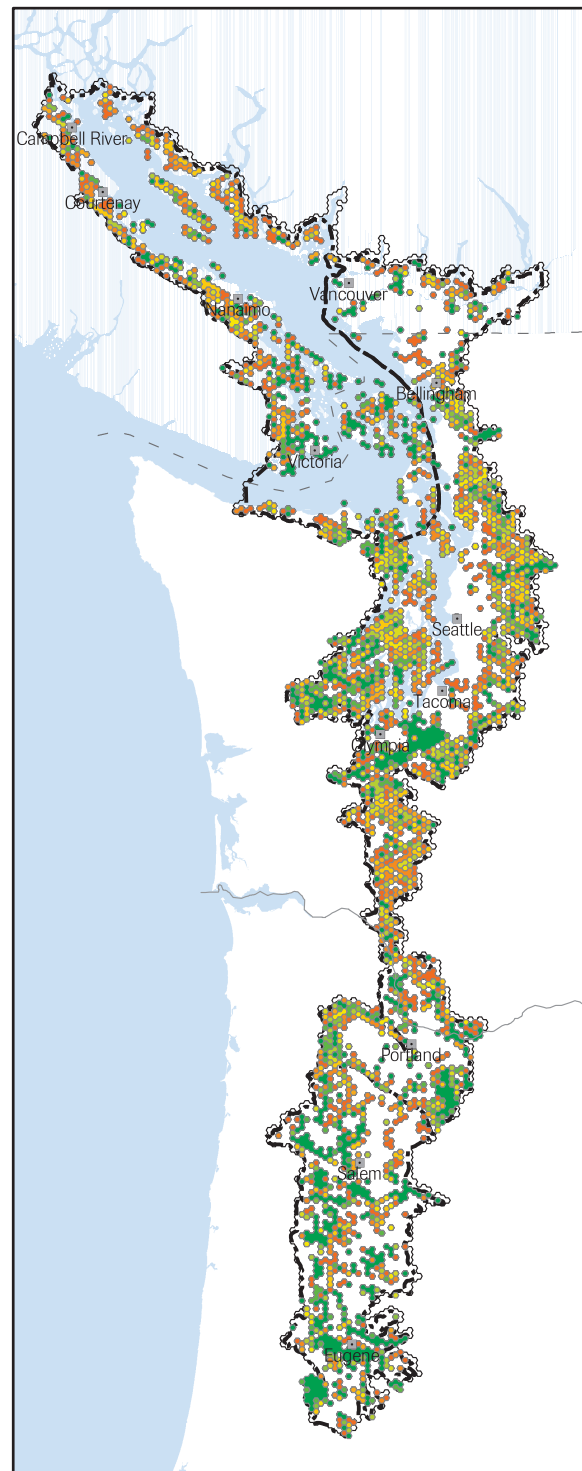
20% of standard goals for all targets



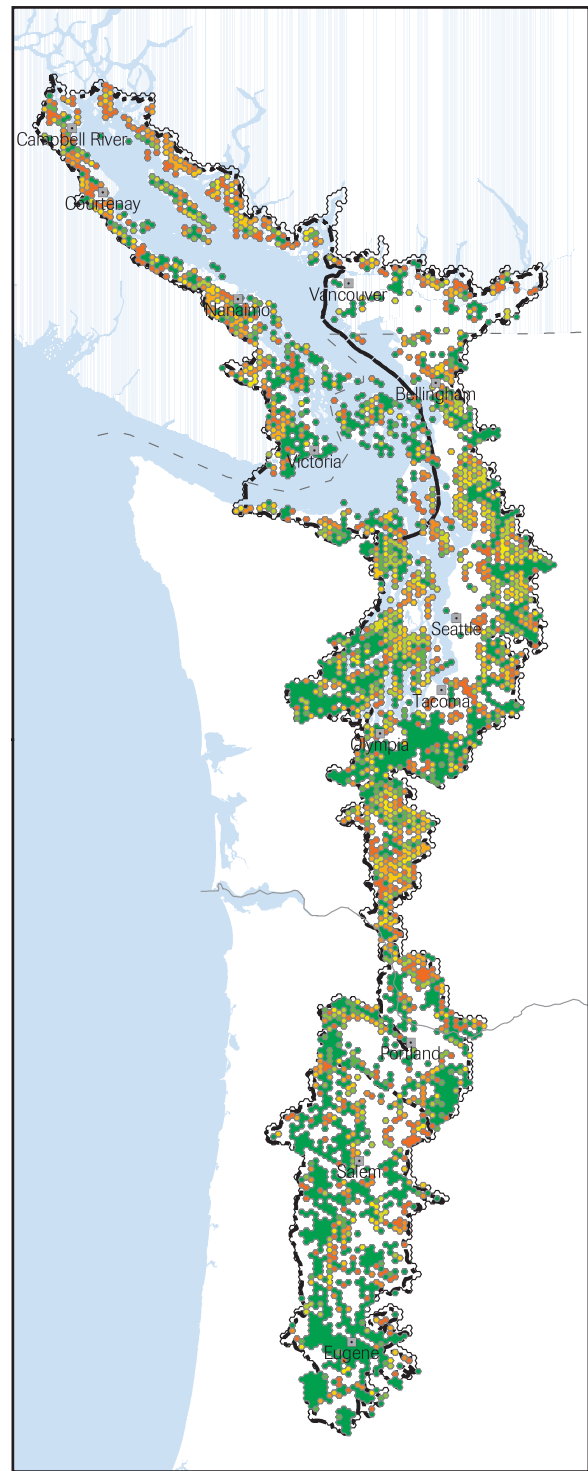
40% of standard goals for all targets



60% of standard goals for all targets



80% of standard goals for all targets



100% of standard goals for all targets

Relative Importance



Willamette Valley - Puget Trough - Georgia Basin Ecoregion

Map 6.4: SITES Model Sensitivity Analysis without Suitability Index

Changes in site selection as conservation goals are increased and without the suitability index. Colors indicate the relative importance of a hexagon for meeting the conservation goals. Dark green hexagons must always be included in the solution. Yellow and orange hexagons can be swapped with other yellow or orange hexagons. As goals increase the number of hexagons selected also increases. As goals increase there are fewer options for meeting the goals. This is indicated by the number of green hexagons, which increases with increasing goals. Without the suitability index, the algorithm has more options to meet the conservation goals than with the index (see Map 6.6). Also, the solution is more dispersed without the index and will include hexagons where conservation is less feasible.

1 inch equals 65 miles

0 10 20 30 40 50 60 70 Miles



0 20 40 60 80 100 120 140 Kilometers



Sources:
TNC, WDFW

March 2004

The Nature Conservancy

SAVING THE LAST GREAT PLACES ON EARTH



The Nature Conservancy (TNC) does not verify or guarantee the accuracy, reliability, or completeness of any data provided. TNC provides this data without any warranty of any kind whatsoever, either express or implied. TNC shall not be liable for incidental, consequential, or special damages arising out of the use of any data provided by TNC.

